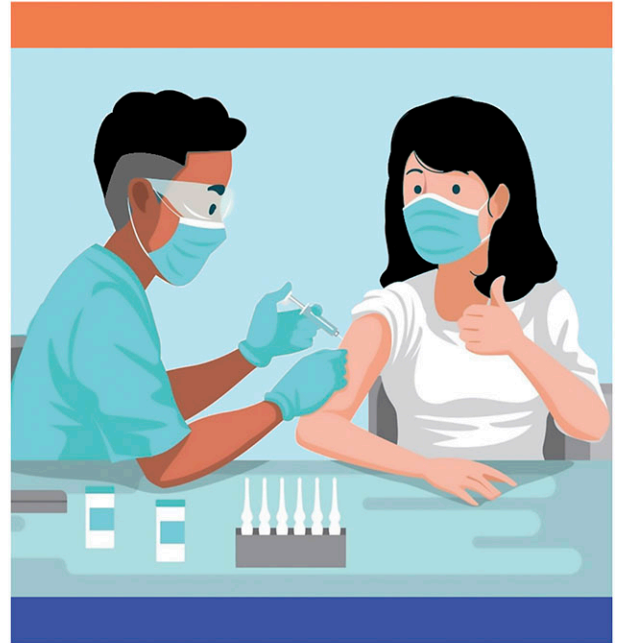


The Community COVID-19 Level for Lycoming & Clinton Counties is HIGH

**Get vaxxed
& boosted**

Wear a well-fitted N95-type mask in public indoor places during “high” community COVID-19 levels



Contact your healthcare provider



Test when symptomatic or exposed to someone with COVID-19



Get treatment within the first five days of testing positive.

Let's end
COVID!

www.covid.gov